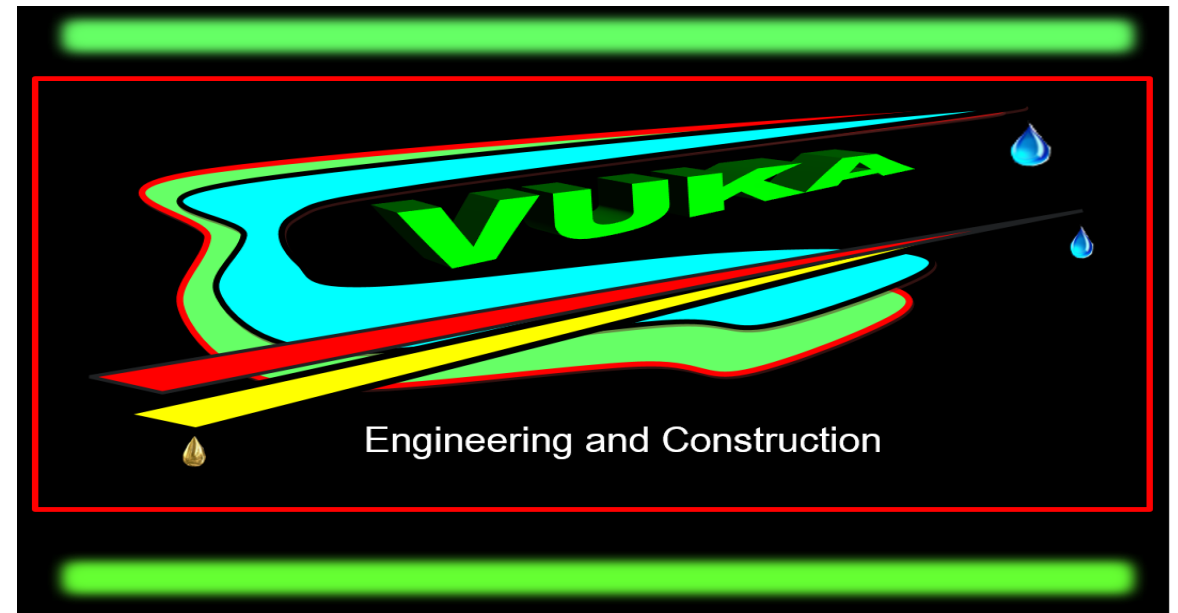


We market and sell tanks on behalf of a professional tank manufacturer dedicated to the design and fabrication of bolted storage tanks.

We will provide a cost effective service for your tank requirements.



Vuka team members have managed the installation of more than 50 bolted tanks in South Africa and Africa over the last 20 years.

Our 73 tank jacks are used for a safe and cost effective installation.

Our crane truck unload material and lift roof beams and other material for tank construction and other mechanical installations.

We have trained installation teams to install tanks.

The workshop



Enamel frit



**Steel Plate
CNC Cutting**



**Automatic
Enamel Line**



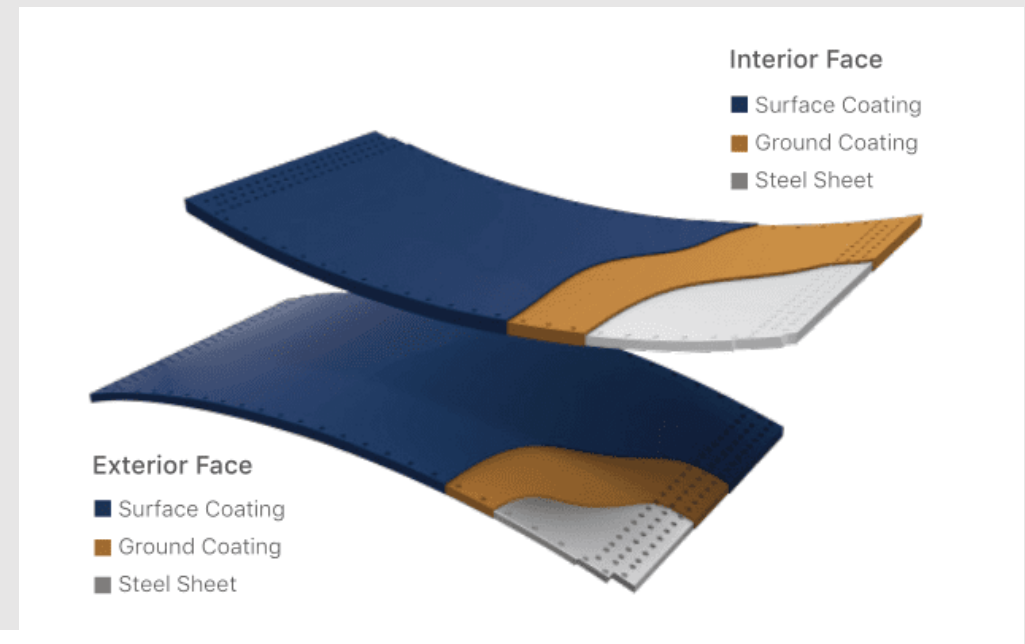
Product R&D



What is Glass-Fused-to-Steel ?

After firing at 820 ° C-930 ° C high temperature, the molten glass reacts with the steel plate surface to form an inert and inorganic bond, which combines the strength & flexibility of steel and outstanding corrosion resistance of glass, therefore GFS tanks can provide many advantages over standard epoxy or welded painted storage tanks. Glass-Fused-to-Steel technology is the premium coating technology in the storage tanks market, and **GFS tanks are widely used in bio-energy, potable water storage, municipal sewage, landfill leachate, industrial wastewater treatment and other applications.**

Double Coating Layer Structure (2C2F)



Properties of CEC tanks

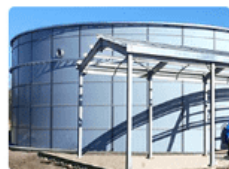
Coating Color	Black blue, Grey olive, Forest green, Cobalt blue, Desert tan etc.
Coating thickness	10- 18 mils, 250-450 microns
Acid and alkalinity proof	Standard PH: 3~11, Special PH:1~14
Adhesion	5,000 psi
Hardness	6.0 (Mohs)
Service life	≥30 Years
Holiday test	>1500V
Permeability	Gas liquid impermeable
Easy to clean	Smooth, glossy, inert, anti-adhesion
Corrosion resistance	Excellent, suitable for wastewater, salt water, sea water, high sulfur crude oil, salt fog organic and inorganic compounds

Adobe
Vegas

CEC
Design



Light Blue



Light Grey



Dark Green



Tan



Dark Blue



Forest Green



White



Cobalt Blue

Why choose Glass-Fused-to-Steel Bolted Tanks?

GFS tanks Advantages :

- **Short Installation Time:** prefabricated, rapid and simple
- **Low Capital Investment:** very low maintenance cost
- **30 Years Service Life:** superior corrosion resistance
- **Attractive Appearance:** color can be customized
- **Quality Control:** according to international standards
- **Flexibility:** re-model, extend, dismantle and relocate
- **Remote areas:**

Installation was done in remote areas where large concrete volumes for tank walls were not available.

Less resources are needed for high skilled work associated with large concrete structures.

Plant required for concrete structures are drastically reduced.

The quality of the construction material is managed in a controlled environment in a workshop improving the final product.

A Skilled supervisor can be supplied to train local labour for the installation of the tanks making the installation more cost effective.

Pedo Banderas

Adobe
Vegas
Photoshop
Code
Design

Main Production Procedure

Plate CNC Cutting



Step 1

Enamel Spraying



Step 2

High Temperature Burning



Step 3

Quality Inspection



Step 4

Main accessories of GFS tanks



Vertical Ladder

Vertical ladder/ Tilt ladder/ Helical ladder



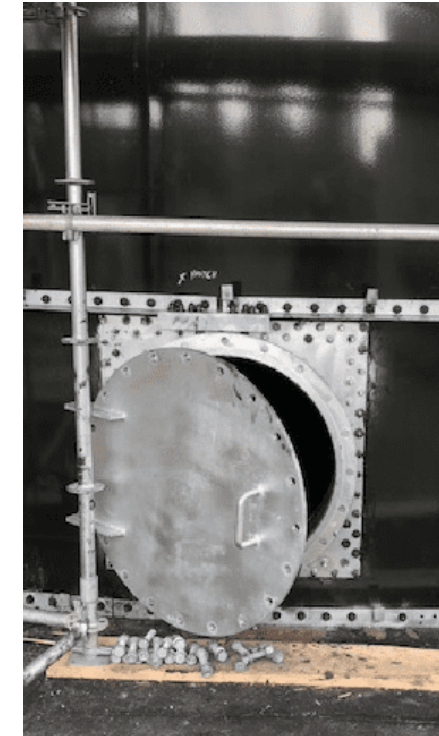
Roof Handrail

Partial guardrail/
perimeter guardrail



Ladder Platform

With guardrail &
kickboard



Manway/Nozzle

HDG/ SS/ Epoxy Coating

Quality Control

Raw Material Test: raw materials ingredient analysis, impurity test etc.

Enamel Formula Test: enamel fluidity test, color difference analysis, acid and alkali resistance test, adherence / impact test, slice microscope analysis

Inspection During Production: magnify experiment simulated operation environment

Final Quality Test: impact test, 1500V holiday test, coating thickness test

Acid and Alkali Resistance Test



1500V Holiday Test



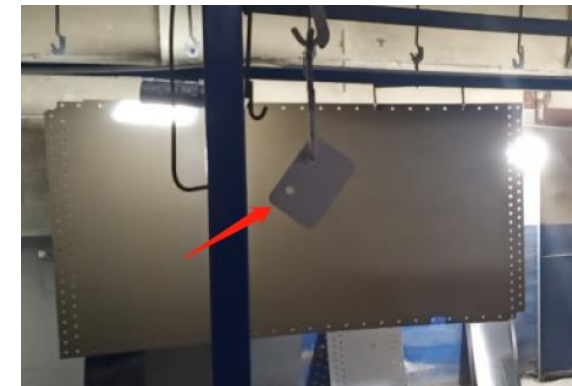
Plate edge corrosion protection inspections



Adherence Test

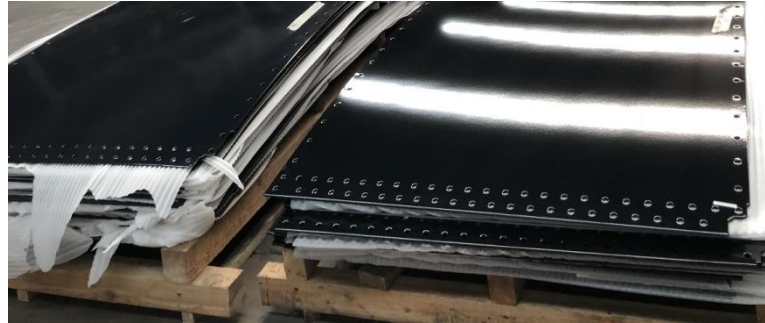


Enamel Thickness Test



Sample check during the whole production

Package



Small items

Small items such as bolts, nuts are packaged in wood pallet, then wrapped with plastic film



Enamel sheet

Enamel sheet s are well packaged in wood pallet with Max. Weight limitation 3T



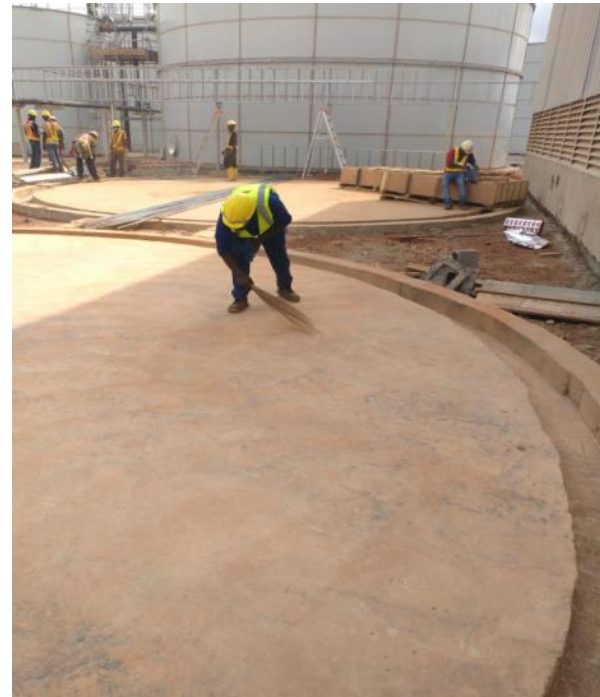
Container Loading

Enamel sheet pallet in the middle, long items such as rafters at left/right sides, light items on top of wood pallet

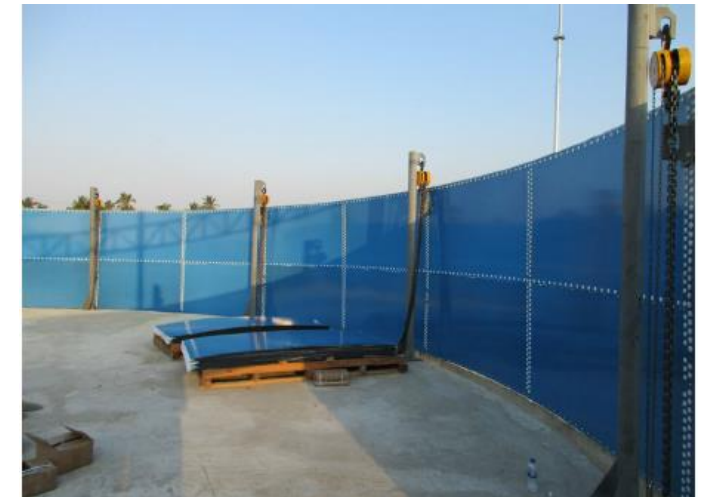
Installation

Common Foundation Types:

1. Embedded bottom ring
2. Starter ring
3. Above floor
4. Glass-Fused-to-Steel floor



Main Installation Tools:
Steel Pole, Chain Block, Jack and electrical tools



GFS Tanks Installation



Apply the Sealant



Finish the top ring



Lifting up top ring

GFS Tanks Installation



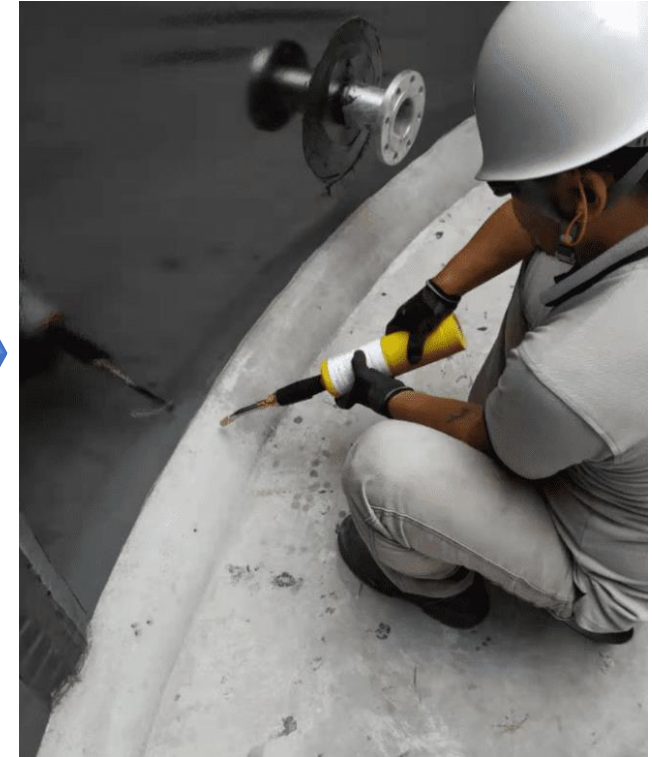
Install the base angles



Water-expanding rubber strip



Waterproof sealant



C28/35 Protective Layer